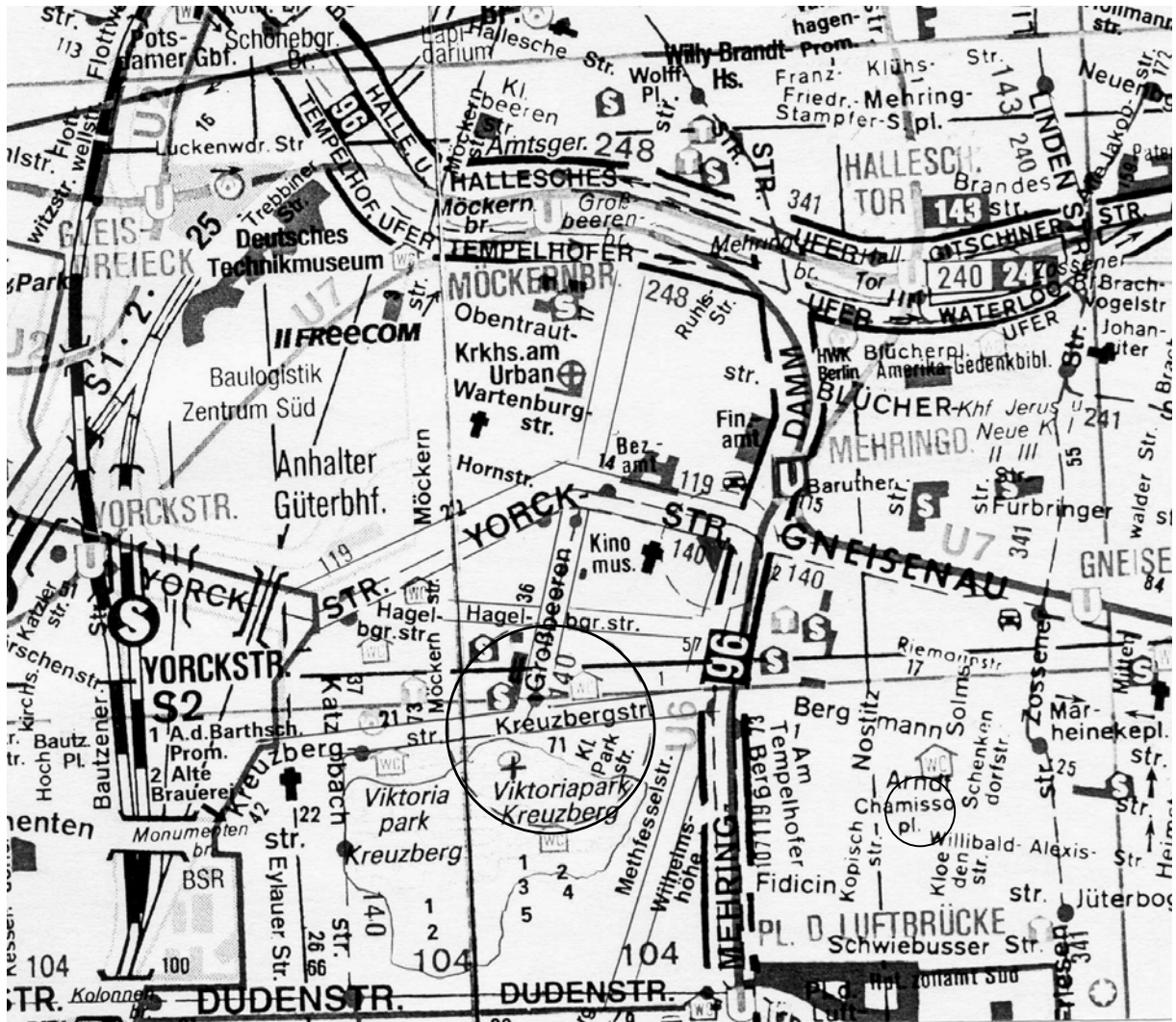


## TOUR II

### Kreuzberg 61



- **Victoria Luise Park (Schinkel monument)**
- **Charlotte Salomon School (Schoolyard project, visiting day)**

#### Optional

- **Playground Chamissoplatz**

## The *Kreuzberg Monument* and the *Victoria Luise Park*



Kreuzberg Monument

This national monument is one of the last symbols Friedrich Wilhelm IV has ordered from Friedrich Schinkel after the king's victory against France.

The 12 statues around the monument remember 12 victories in the war. The iron cross on the top of the monument gave name to the hill on which it stood and later on to the whole area .

The monument was 1821 situated on "*Götzens Weinberg*" some miles apart from Berlin. In 1860 most villages around Berlin became administrative part of the city. With the tremendous expansion in the following years, its boarder reaches the "*Weinberg*" in 1867.

Due to further urban densification, the monument had been lifted by 8 meters in 1878/79 and situated anew, so that it looks over the Großbeerenstreet.

Schinkel had planned a luxurious surrounding around the monument, which had never been realized.

1888 – 1894 the sandy hill became the Victoria Luise park with its playgrounds and waterfalls. It is today one of the favourite green areas of whole the district.

## Charlotte Salomon School

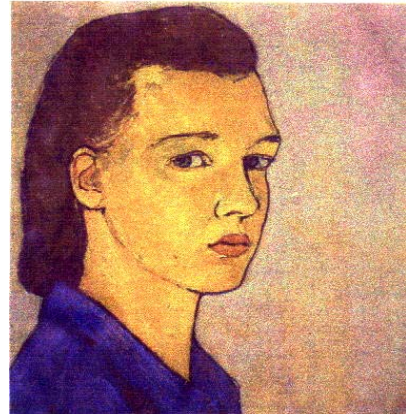
The Charlotte Salomon School is a primary school in Kreuzberg 61.

It has classes ranging from 15 to 25 pupils.

Most of them are “Integration – Classes” that means classes in which handicapped and non-handicapped children are learning together. Further on there are classes with different ages in one class.

English or French is possible from the beginning.

There are projects with the opera house in Berlin and several circus projects.



In 1995 the school, which is sharing their schoolyard with the Adolf Glaßbrenner School developed a new concept for their outdoor spaces together with its pupils, the parents and the teachers.

The Architects Dieter and Bachmann designed a new schoolyard. Most of the elements one can find there like the walls, the objects or even the mosaic on the foot-paths were designed and constructed by the pupils themselves.

Because the Adolf Glaßbrenner School had several renovation works to do in the buildings last year, the schoolyard is not finished there yet, but it will be in the next year.

# The Schoolyard



The courtyard (before)



The courtyard (after)



Wall mosaic (work by children)



Ways out of recycled bricks from old buildings



Wall ornament (work by children)



Wall with mosaic (6. class project)



Masterplan by Dieter and Bachmann